

Composite Sulfonated Polyimides With Carbon Nanotubes for Proton Exchange Membrane

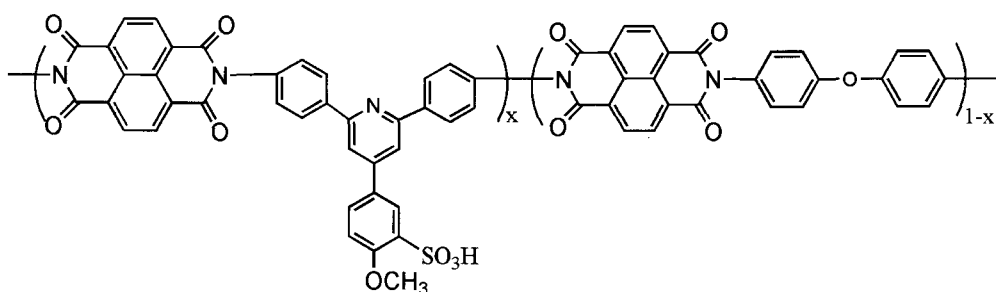
Rui Lei^{a,b} (雷瑞), Lianxun Gao^{a,*} (高连勋)

^a State Key Laboratory of Polymer Physics and Chemistry, Changchun Institute of Applied Chemistry, Chinese Academy of Sciences, Changchun 130022, P.R. China;
(中科院长春应用化学研究所)

^b Graduate University of the Chinese Academy of Sciences, Beijing 100049, P.R. China

* Corresponding author. Tel: +86-431-85262259 E-mail address: lxxgao@ciac.jl.cn

A study is presented of the characteristic of a series of nanocomposites based on sulfonated polyimide (SPI) as a matrix and functional carbon nanotubes (CNTs) as nanoadditive. The SPIs were derived from polycondensation of 1,4,5,8-naphthalene-tetracarboxylic dianhydride (NTDA), 5-(2, 6-bis(4-aminophenyl)pyridin-4-yl)-2-methoxy benzene sulfonic acid (SDAM), and 4,4'-diaminodiphenyl ether (ODA) according to our previous work (Scheme 1). The CNTs were sulfonated by a certain concentration mixture of H₂SO₄/HNO₃. Various SPI(50)-X were synthesized by control the content of CNTs, where 50 represents the degree of sulfonation (DS), and X indicated the weight percentage of CNTs and increased gradually from 0.1, 0.5 to 1%. Flexible, transparent, tough and homogeneous membranes were obtained. Comparing with the pristine films, the composite membranes showed comparable thermal stability and mechanical properties, though they became somewhat brittle. As expected, the proton conductivities of the composite SPIs were improved obviously (Fig. 1), but achieve the maximum when the weight percentage of CNTs is 0.5% as shown in Fig. 2. The SPI(50)-1% based membranes showed lower proton conductivities than that of SPI(50)-0.5% maybe due to the relative weak dispersibility when the content of the CNTs achieve a certain extent. The further work is in progress.



Scheme 1. Structure of the SPI matrix.

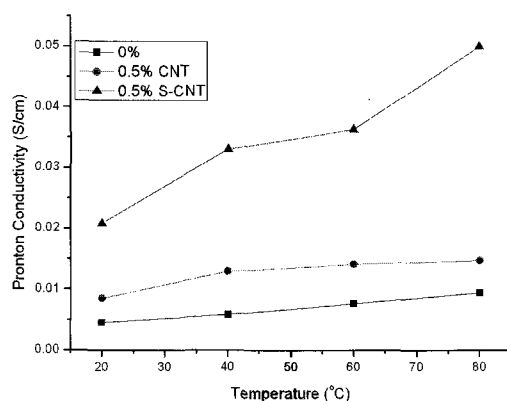


Figure 1. Proton conductivities of composite SPI(50)-0.5% at different temperatures. (S-CNT represent the sulfonated CNT)

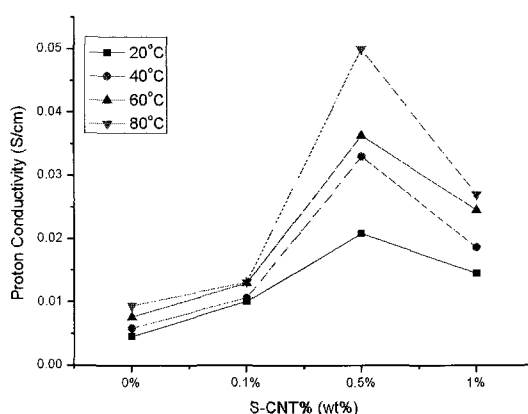


Figure 2. Proton conductivities of various composite SPI(50) membranes with different content of sulfonated CNT at different temperature.

(continuing from p196)

- [16] Hao J J, Jikei M, Kakimoto M. Preparation of hyperbranched aromatic polyimides via A2+B3 approach[J]. *Macromolecules*, 2002, 35, 5372-5381.
- [17] Flory P J. Principles of polymer chemistry[M]. Cornell University Press, New York, 1953.
- [18] Liu Y, Chung T S. Facile synthesis of hyperbranched polyimides from A2+BB'2 monomers[J]. *Journal of Polymer Science: Part A: Polymer Chemistry*, 2002, 40, 4563-4569.
- [19] Chang Y T, Shu C F. Synthesis of hyperbranched aromatic poly(amide-imide): copolymerization of B'B2 monomer with A2 monomer[J]. *Macromolecules*, 2003, 36, 661-666.
- [20] Köytepe S, Pasahan A, Ekinçi E, Seçkin T. Synthesis, characterization and H₂O₂-sensing properties of pyrimidine-based hyperbranched polyimides[J]. *European Polymer Journal*, 2005, 41, 121-127.
- [21] Chu H J, Zhu B K, Xu Y Y. Preparation and dielectric properties of polyimide foams containing crosslinked structures[J]. *Polym. Adv. Technol.* 2006, 17, 366-371.
- [22] Bershtein V A, Egorova L M, Yakushev P N, Sysel P, Hobzova R, Kotek J, Pissis P, Kriptou S, Maroulas P. Hyperbranched polyimides crosslinked with ethylene glycol diglycidyl ether: glass transition dynamics and permeability[J]. *Polymer*, 2006, 47, 6765-6772.
- [23] Park S J, Li K, Jin F L. *Materials Chemistry and Physics*, 2008, 108, 214-219.